

SENSKIN

PRELIMINARY ACTIVITIES AND PREPARATION FOR THE SENSKIN INSTALLATION IN BOSPHORUS BRIDGE



MINISTRY OF TRANSPORT, MARITIME AFFAIRS
AND COMMUNICATION
GENERAL DIRECTORATE OF HIGHWAYS (KGM)



2nd Workshop İstanbul

23.05.2018

Project co-funded
by the EU under H2020



KGM concern



Problem of ageing road infrastructure

KGM concern

- Code changes

Gölcük EQ (1999)



Kobe EQ (1995)

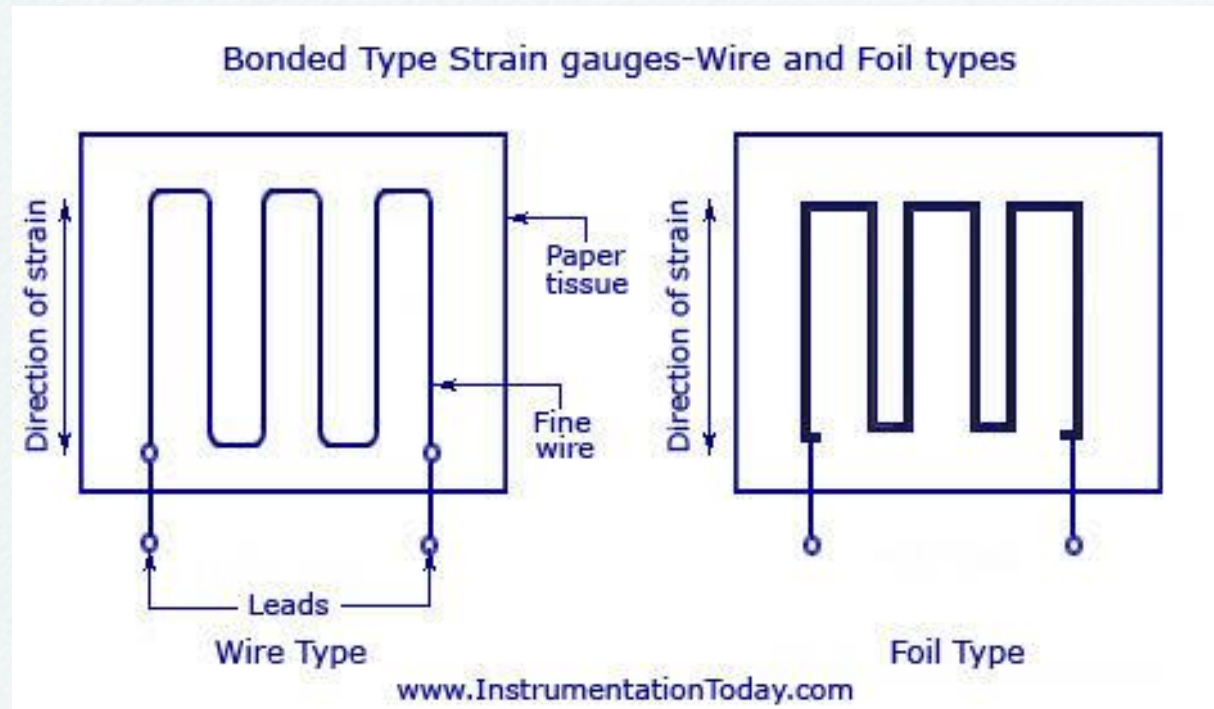


SHMS history

SENSKIN



Performance after Earthquake (???)



Initial sensor places

SENSKIN



User Requirements

Kick off meeting June 1, 2015

SENSKIN

End user needs

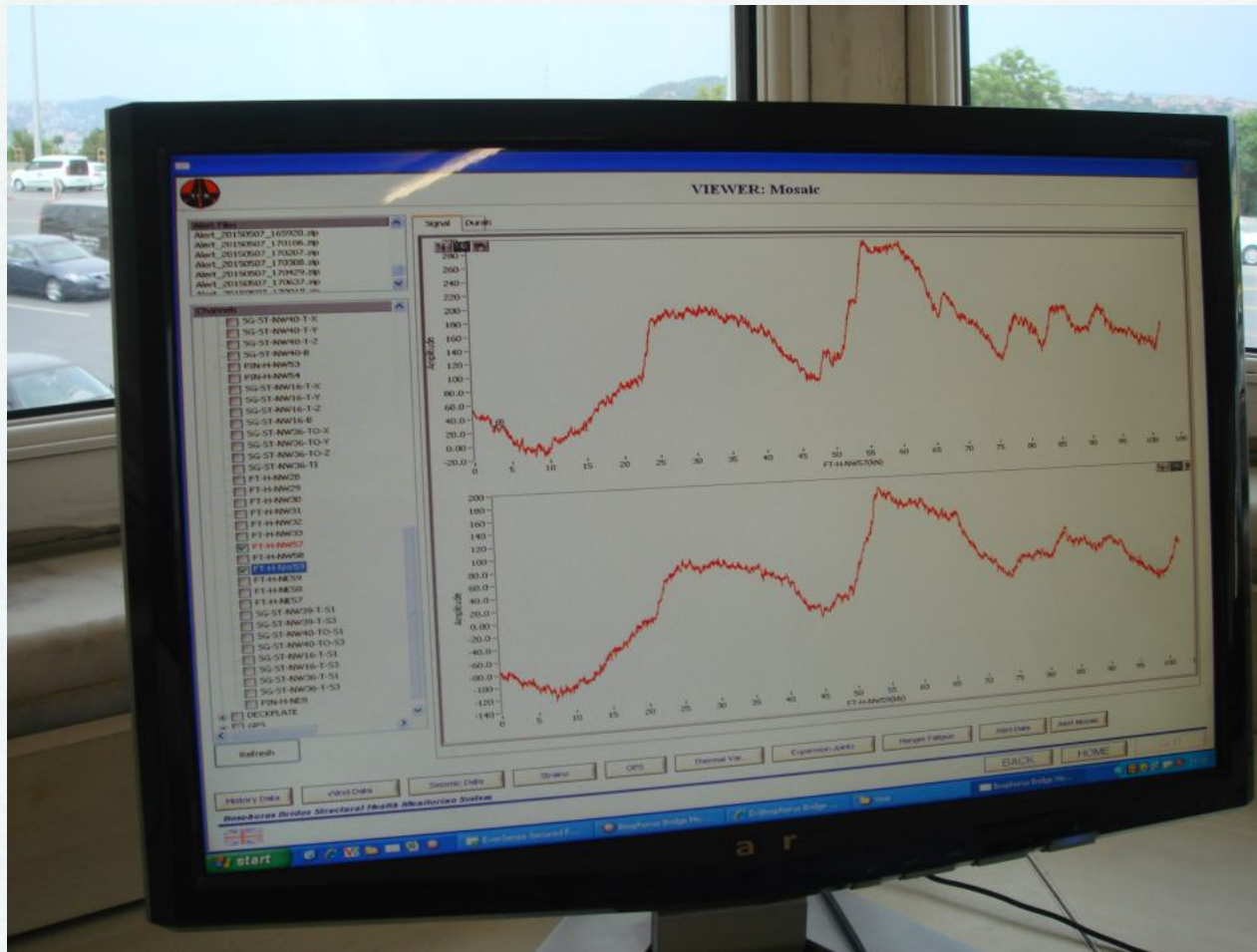
The diagram consists of a large light blue rounded rectangle containing two circles. On the left is a large teal circle labeled 'End user needs'. On the right is a smaller grey circle labeled 'SENSKIN can do'. The teal circle is significantly larger than the grey circle, indicating that user needs are more extensive than the current capabilities of SENSKIN.

SENSKIN
can do

Problem of dependency on a consultant

SENSKIN

?



?

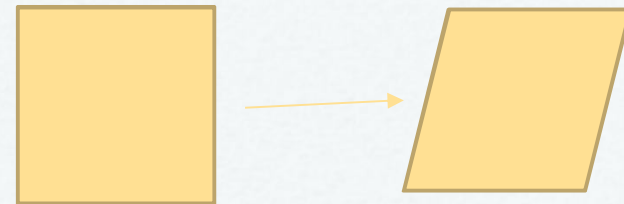
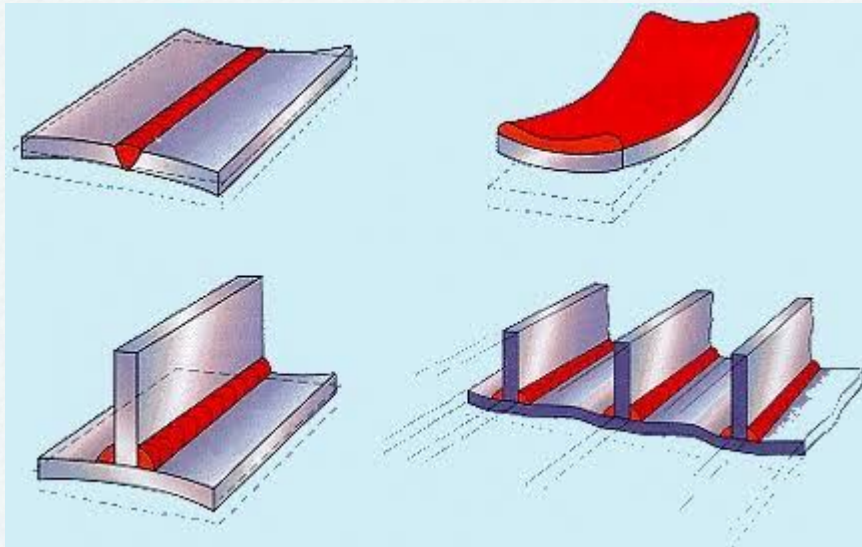
Software compatibility

SENSKIN



Problems of area measuring

SENSKIN



Temperature

SENSKIN



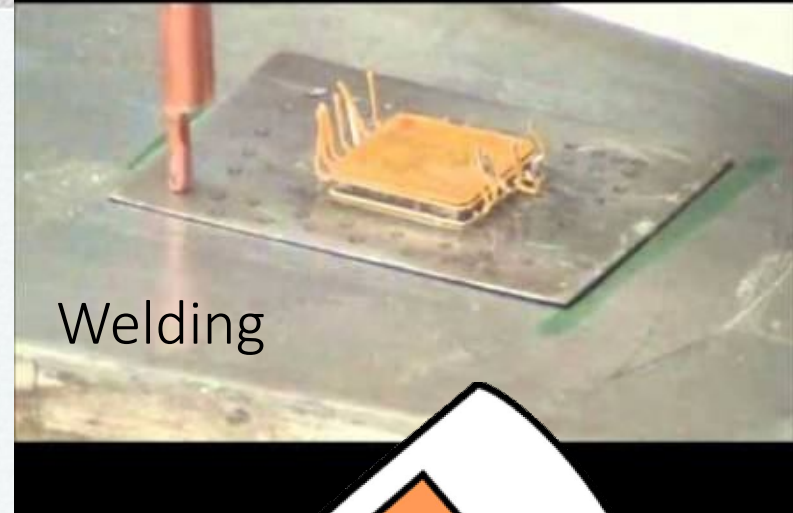
How does the material behave with temperature changes?

How to mount sensors?

Bolting



Welding

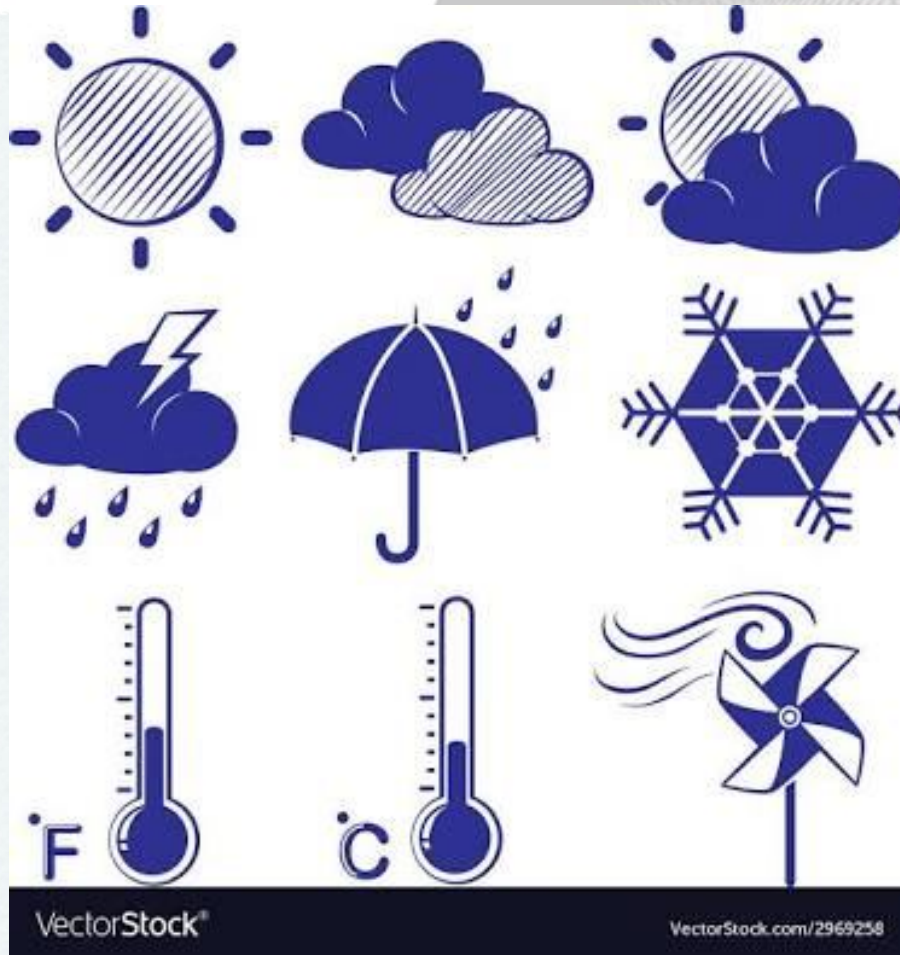


Gluing



Weather conditions and dust

SENSKIN



SHMS being dysfunctional

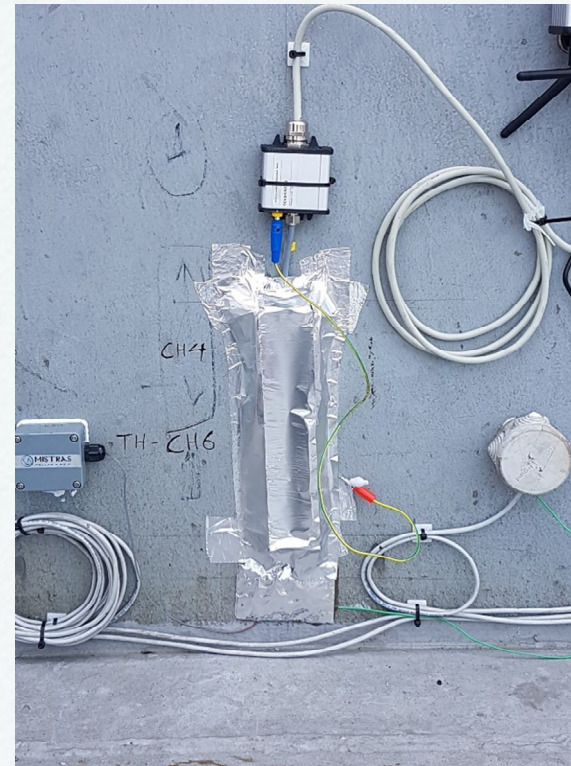
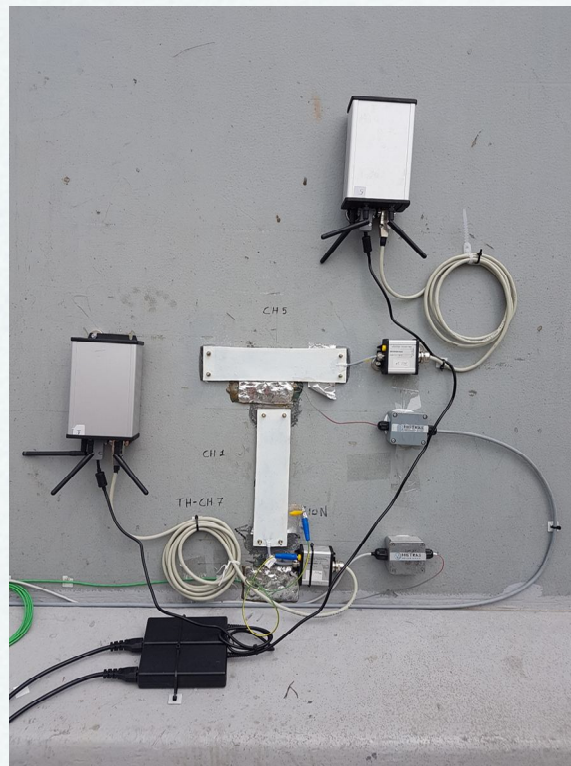
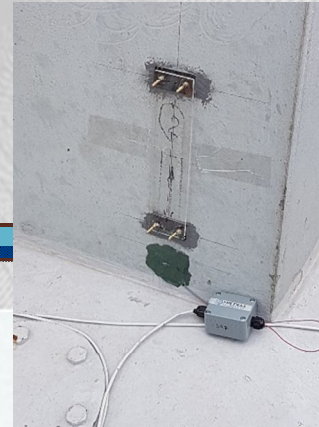


SENSKIN

Change in project

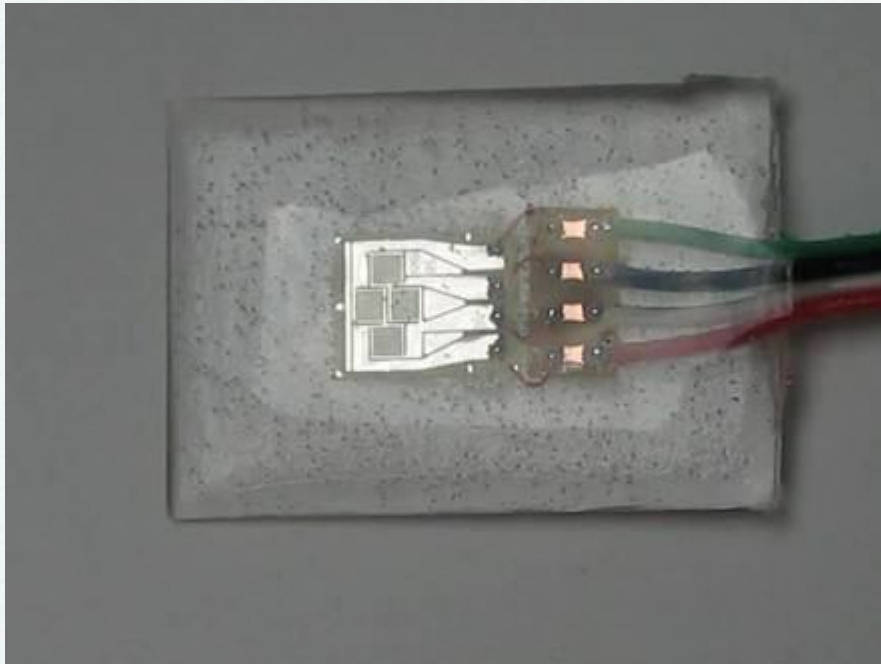
SENSKIN





How should be the casing?

SENSKIN



- Resistant to wind
- Not interfere with SENSKIN movement
- Not accumulate water

SENSKIN

THANK YOU! ANY QUESTIONS?

Rahşan YILDIRIM TELEK

Chief Bridge Engineer

Division of Motorway Operations

Road Construction & Bridges Department

Email: ryildirim@kgm.gov.tr



Project co-funded
by the EU under H2020

